

New results on low mass dark matter from the CRESST-II experiment

TAUP 2015

Torino, September 7

Federica Petricca
Max-Planck-Institute for Physics Munich

on behalf of the CRESST collaboration

The CRESST collaboration



Max-Planck-Institut für Physik
(Werner-Heisenberg-Institut)



Laboratori Nazionali del Gran Sasso

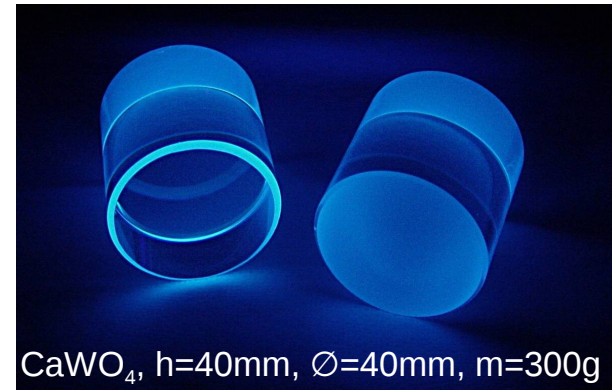


The CRESST experiment

Cryogenic Rare Event Search with Superconducting Thermometers

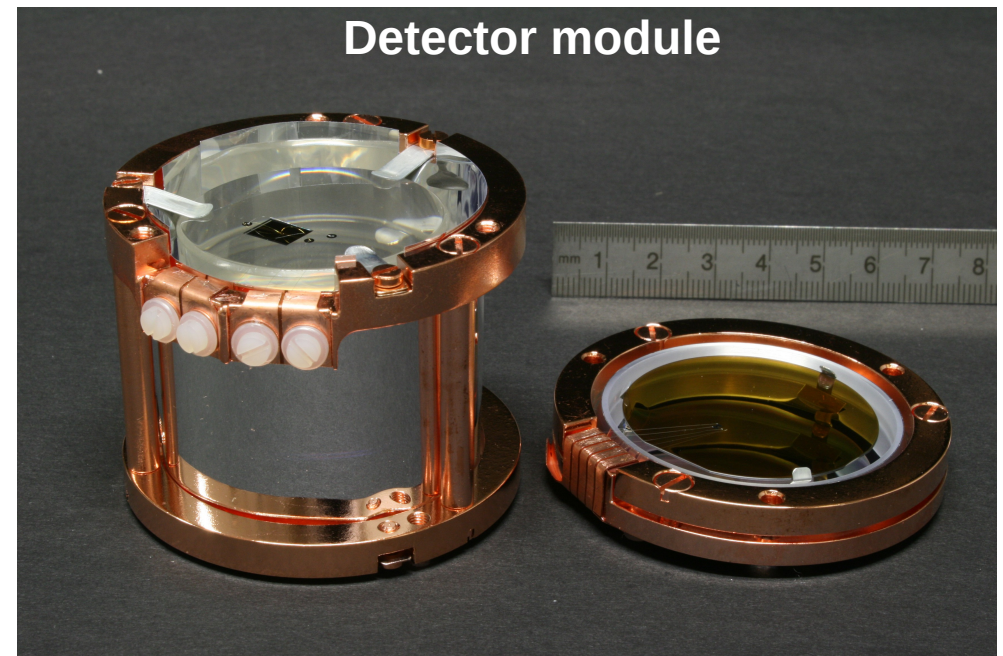
Direct detection of dark matter particles via their scattering off target nuclei

Scintillating CaWO_4 crystals as target



Target crystals operated as
cryogenic calorimeters (~15mK)

Separate **cryogenic light detector** to
detect the scintillation light signal



Detector module

Energy deposition in the crystal:

- mainly phonons

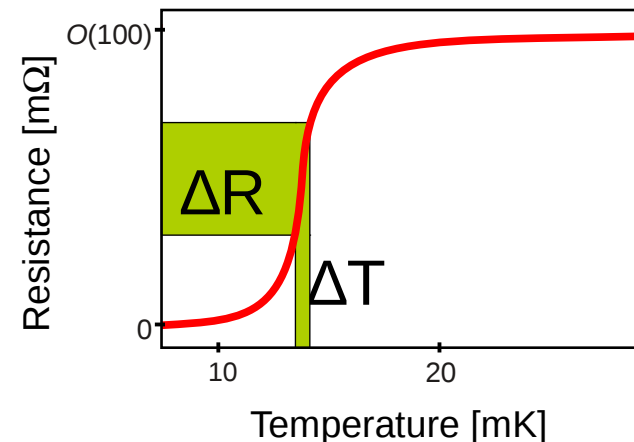
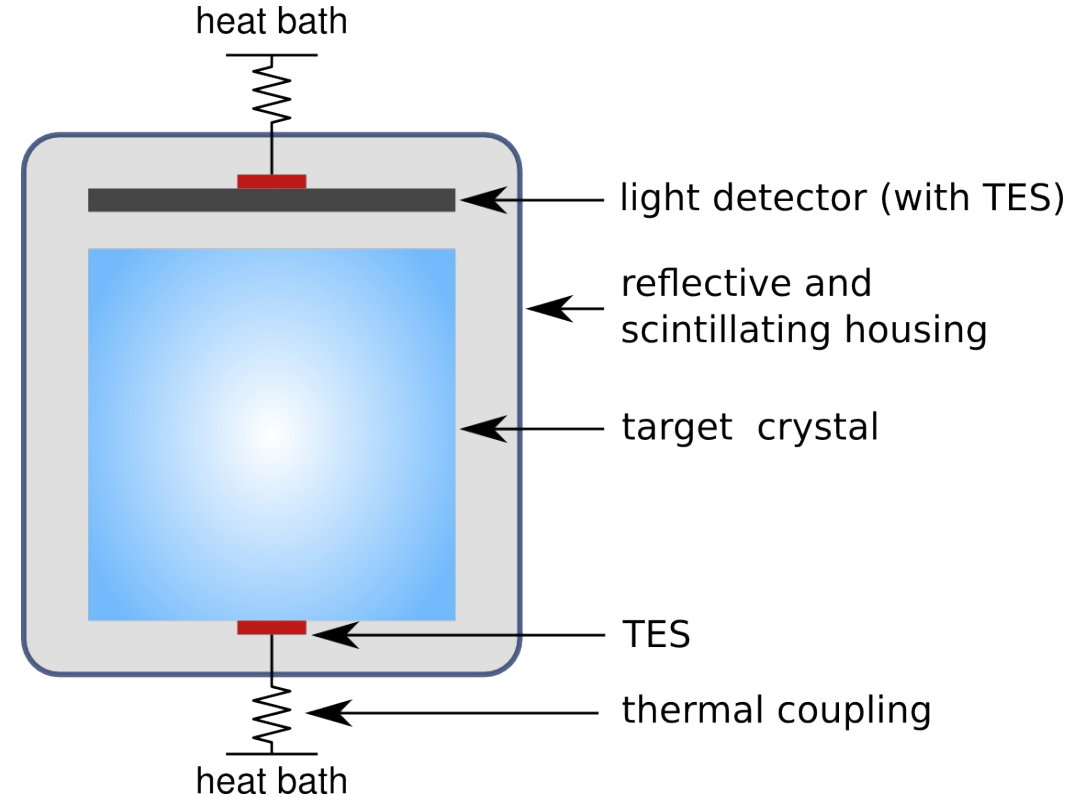
(independent of the type of particle)

Measurement of deposited energy

- small fraction into scintillation light
(characteristic of the type of particle)

Particle discrimination

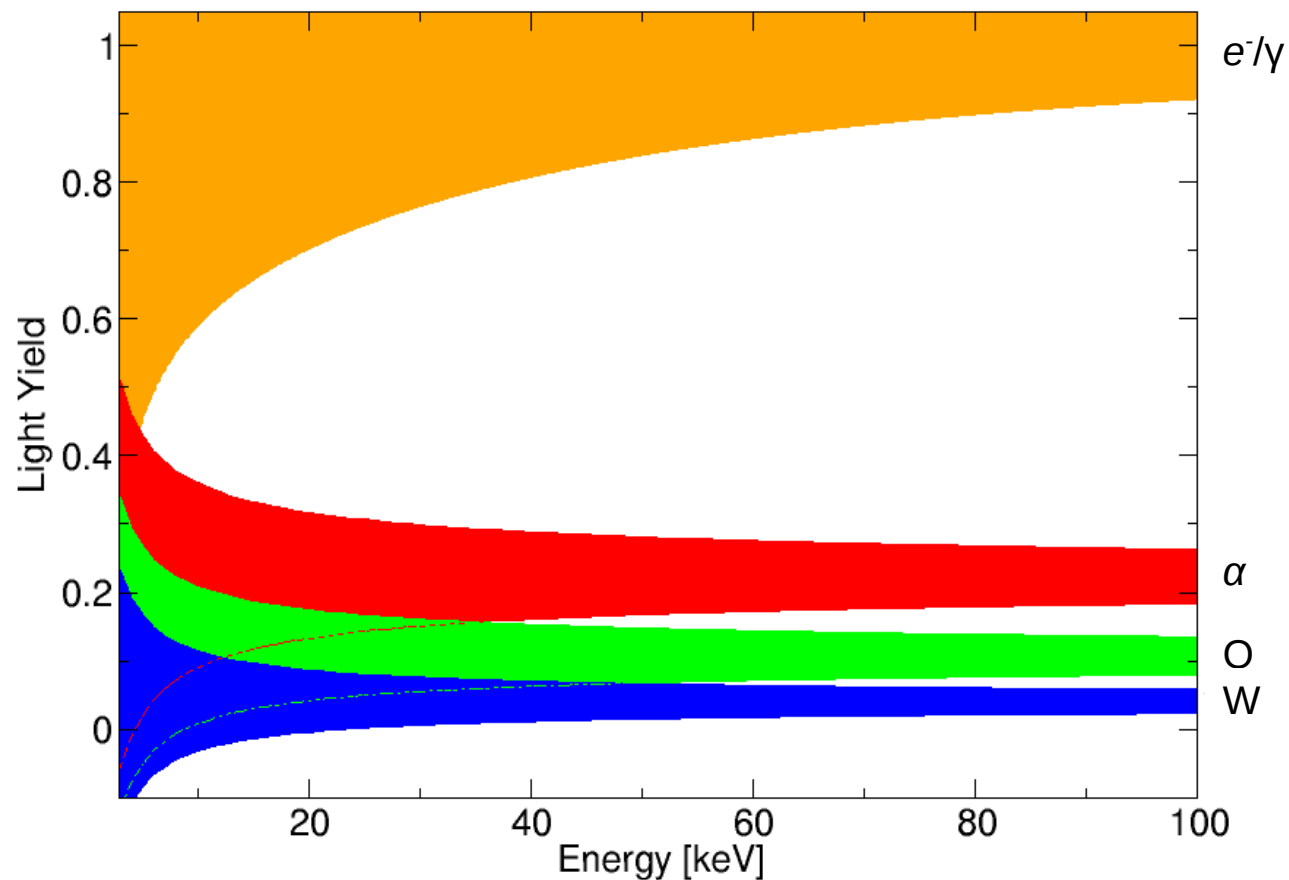
Two simultaneous signals from the two transition edge sensors (**TES**)



Event discrimination

$$\text{Light Yield} = \frac{\text{Light signal}}{\text{Phonon signal}}$$

Characteristic of the event type



Excellent **discrimination** between potential signal events (**nuclear recoils**) and dominant radioactive background (**electron recoils**)

CRESST II Phase 2

Data taking: July 2013 – August 2015

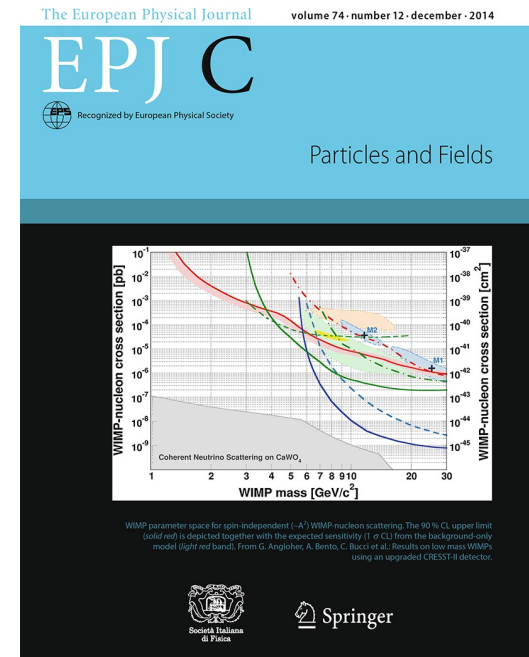
First Phase 2 results on low mass dark matter particles:

- July 2014
- Single module TUM40
- Self grown crystal
- Best overall performance
- 29 kg days of exposure
- Non-blind 2013 dataset

Trigger thresholds of several modules lowered

Final Phase 2 results on low mass dark matter particles:

- September 2015
- Single module Lise
- External supplier
- Lowest threshold
- 52 kg days of exposure
- Full blind data set



arXiv:1509.01515

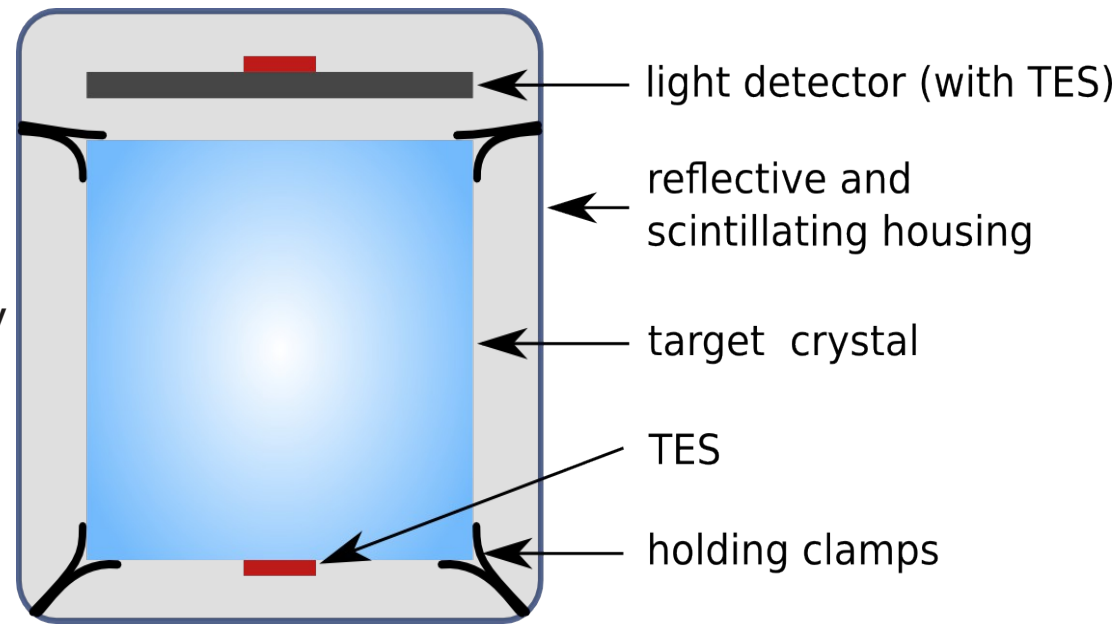
Detector Lise

Detector design: Conventional
No veto for surface alpha decays

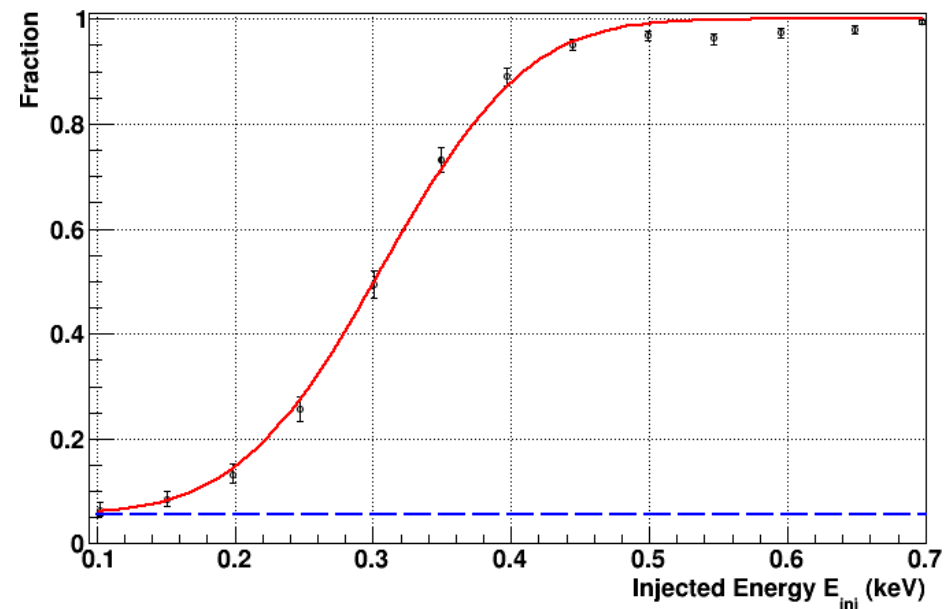
Crystal: Lise (external supplier)
Background level ~ 8.5 counts/keV kg day

Threshold: 307eV

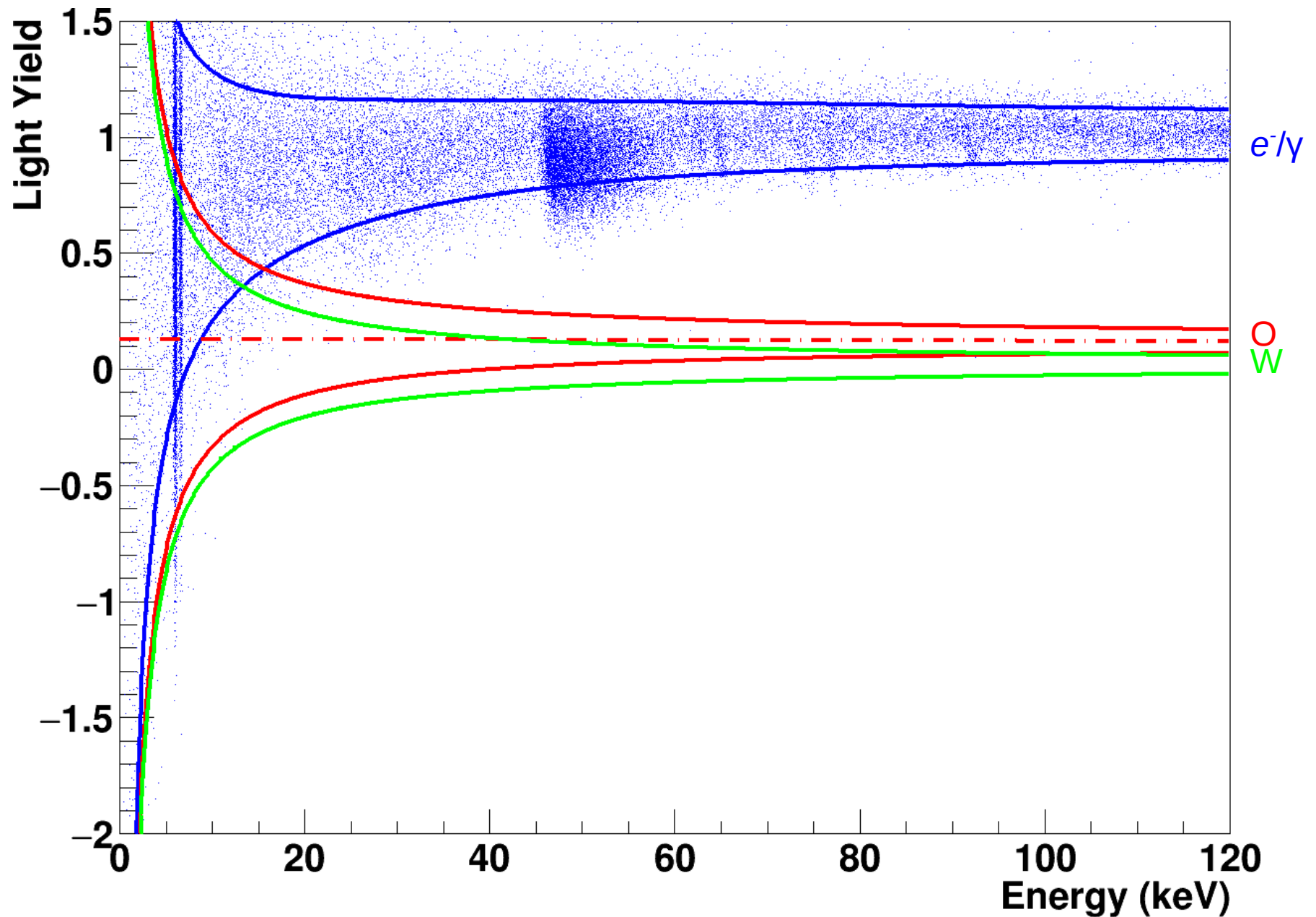
Resolution: 62eV at zero energy



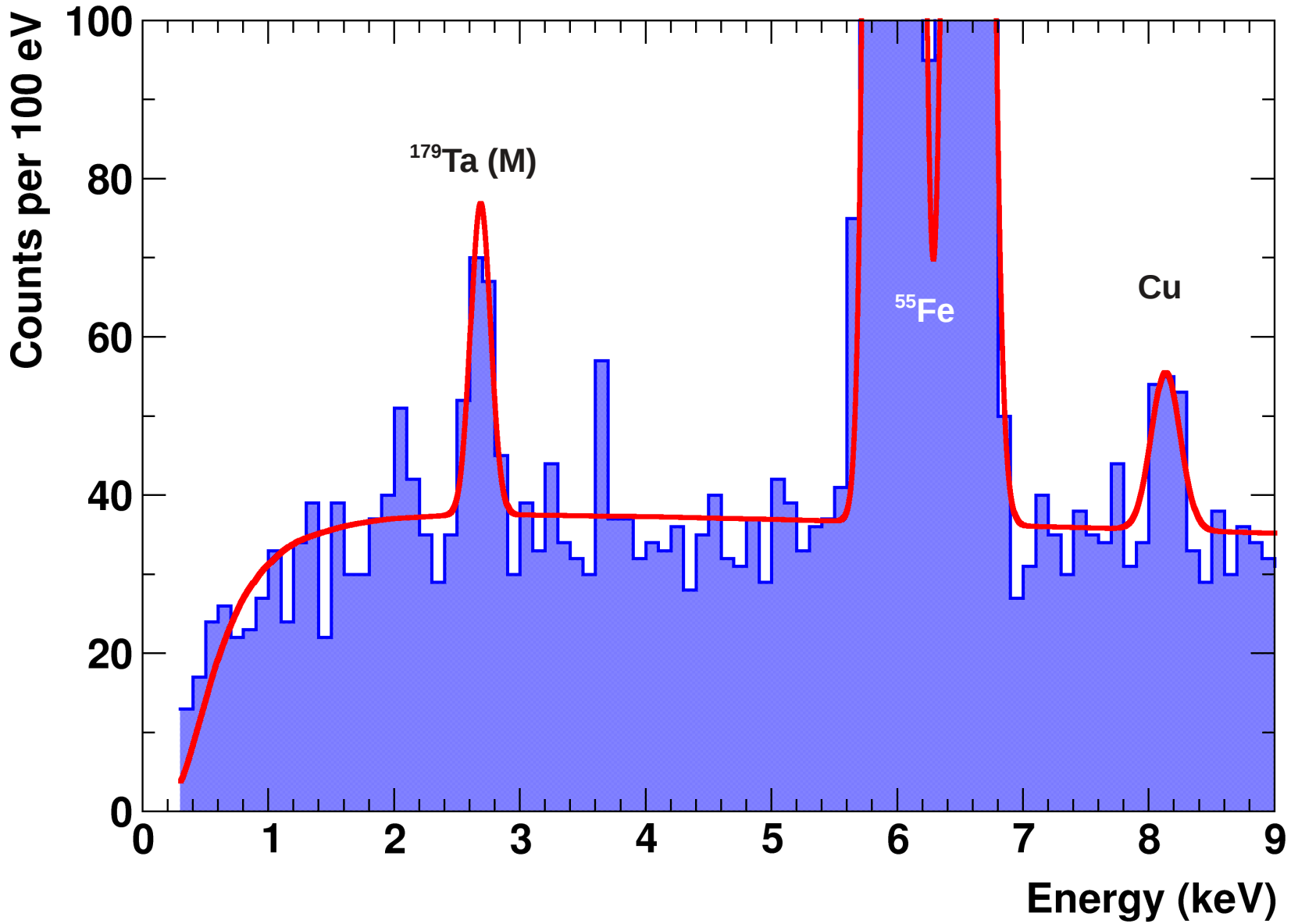
- Average overall performance
- Lowest threshold



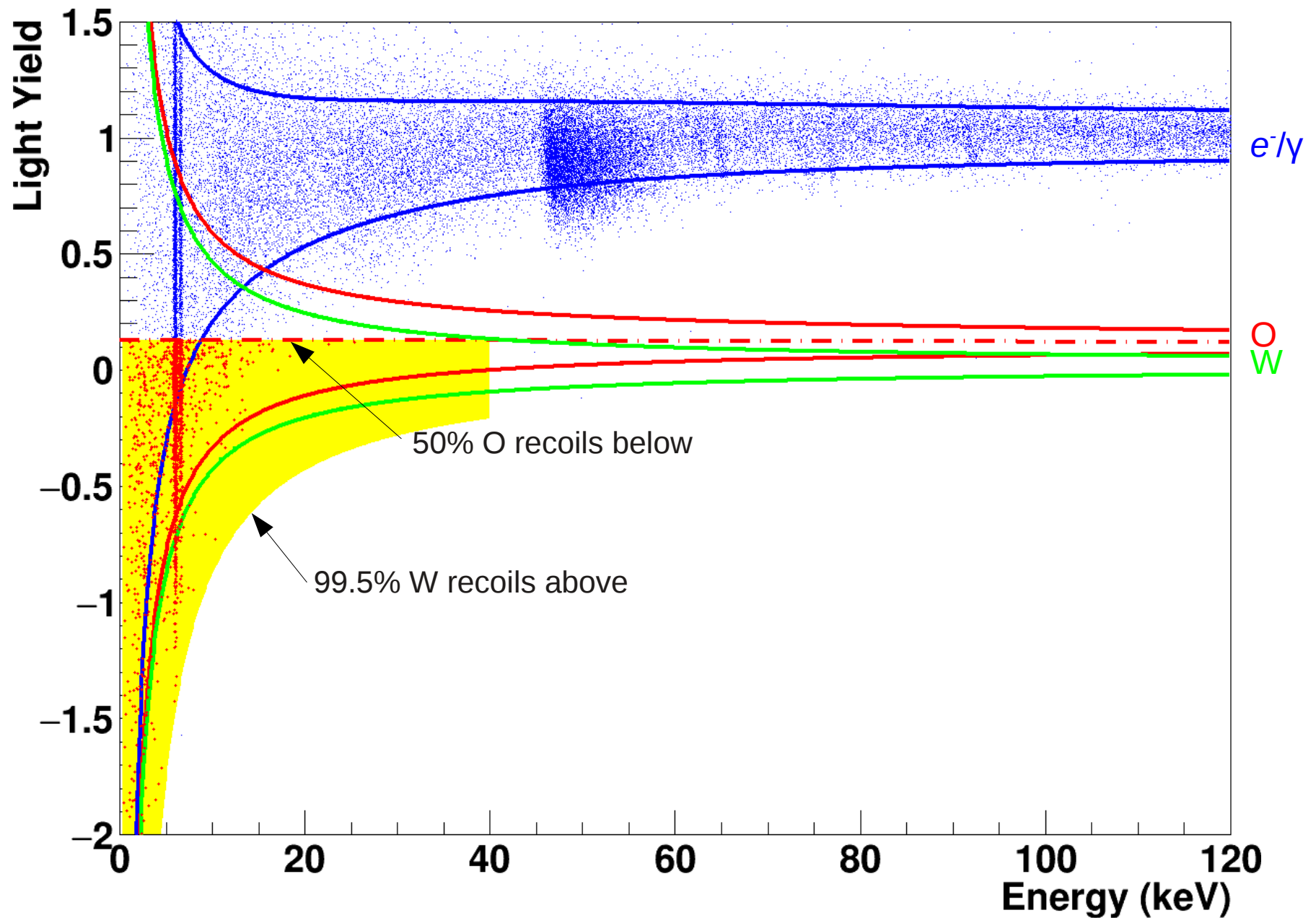
Data



Data



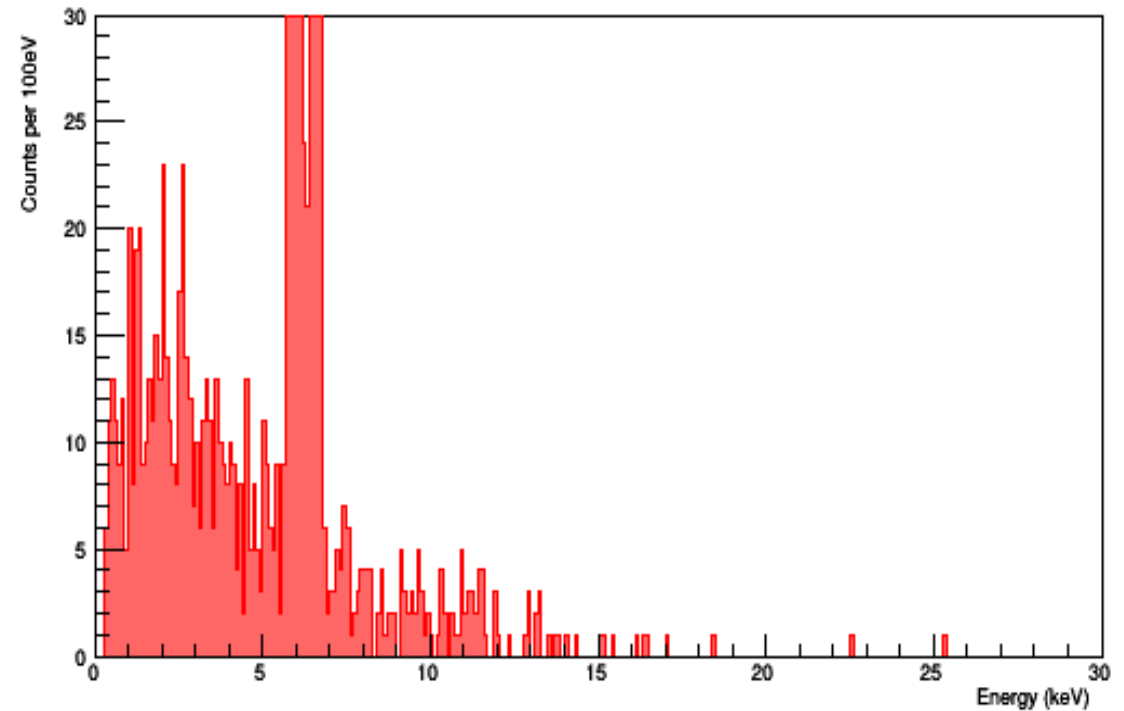
Data



Data

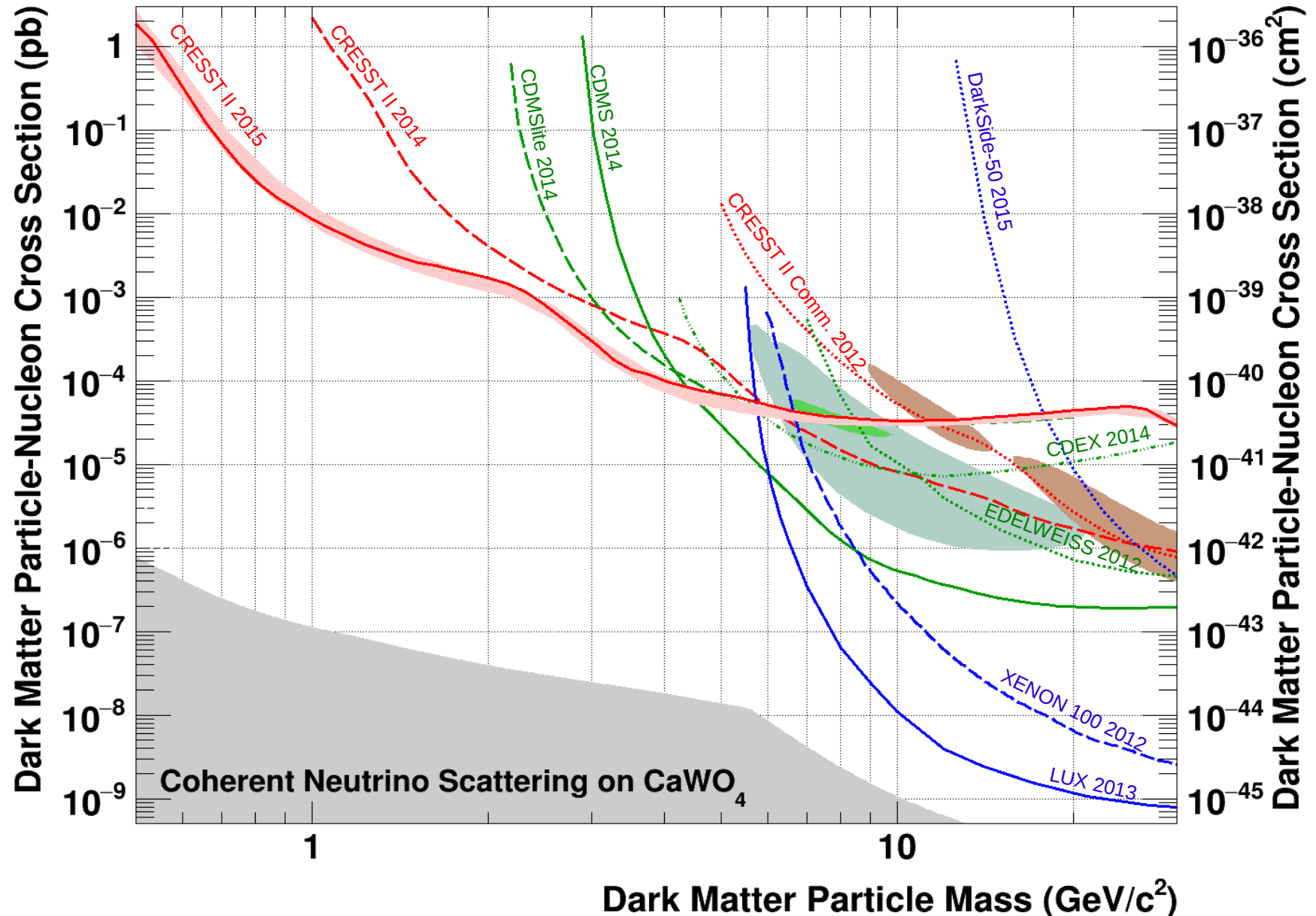
All accepted events considered as potential signal

- Standard assumptions on dark matter halo
- Helm form factors
- Yellin one-dimensional optimum interval method

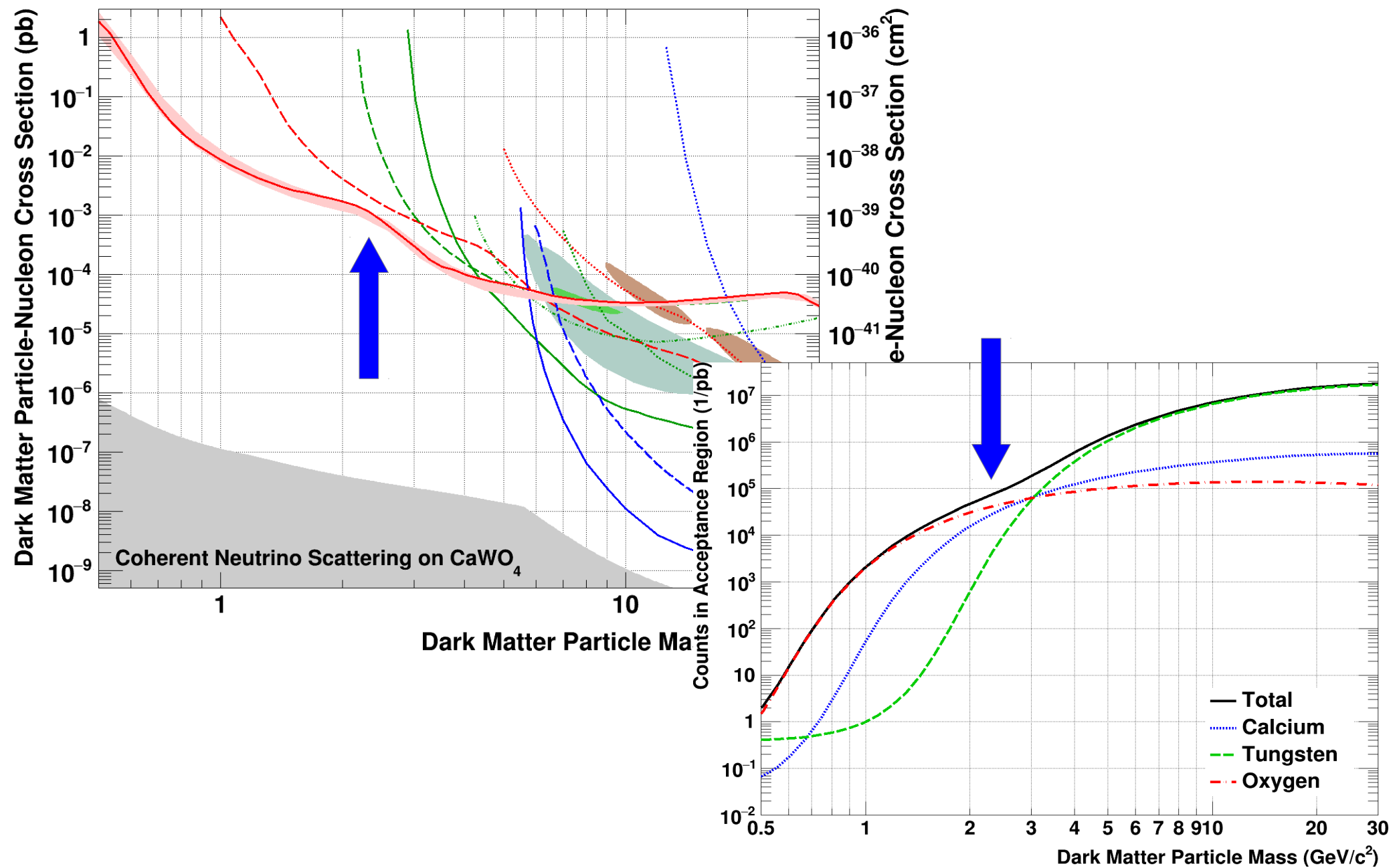


Exclusion limit

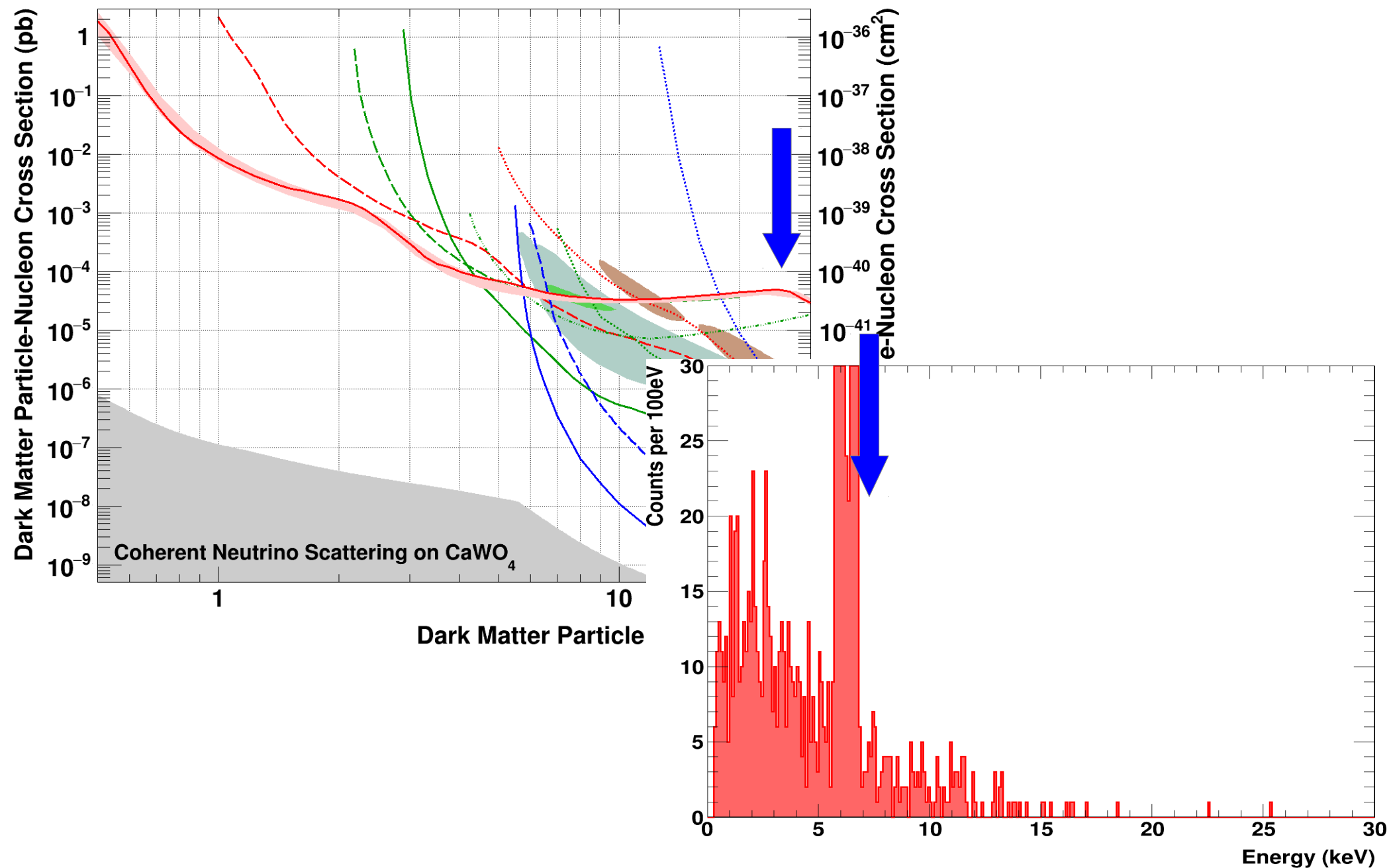
Explore masses in the sub-GeV/c² range



Exclusion limit



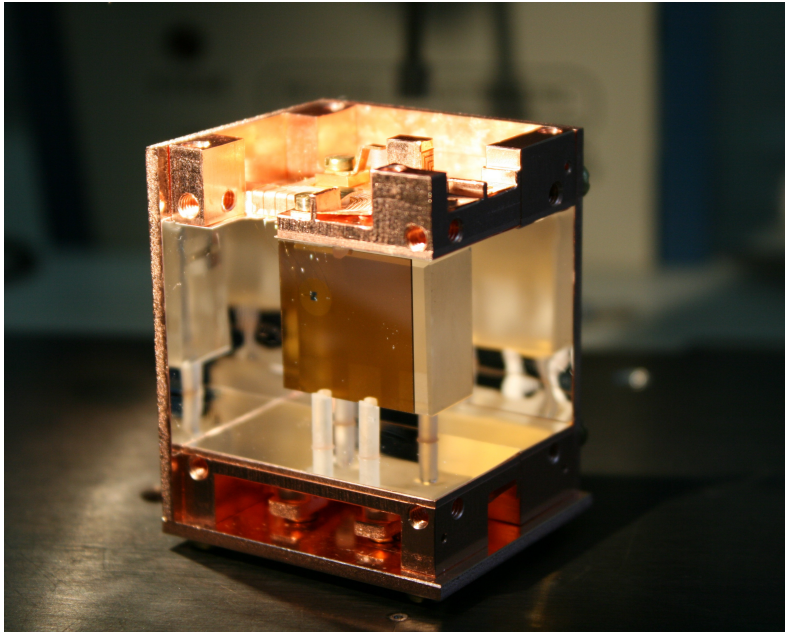
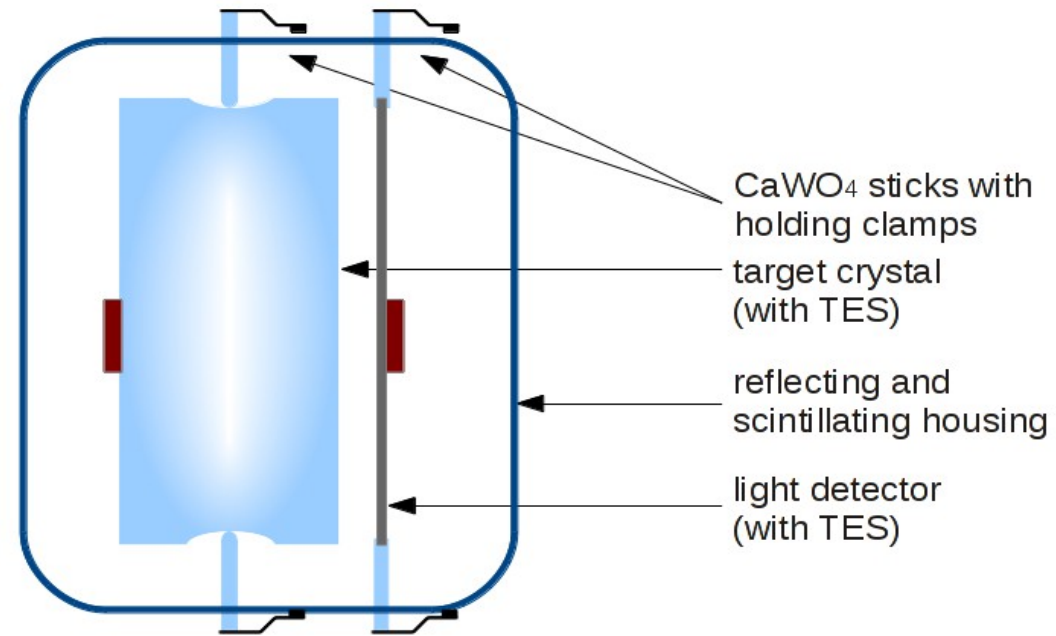
Exclusion limit



Modules for CRESST III

Detector layout optimized for low mass dark matter

- Available self grown crystals (background level ~ 3 counts/keV kg day)
- 100 eV threshold
- Cuboid crystal of $(20 \times 20 \times 10) \text{mm}^3$ ($\sim 25 \text{g}$)
- Fully scintillating housing
- Light detector $(20 \times 20) \text{mm}^2$



Prototype successfully tested
Production of modules ongoing

Start of CRESST III end of 2015

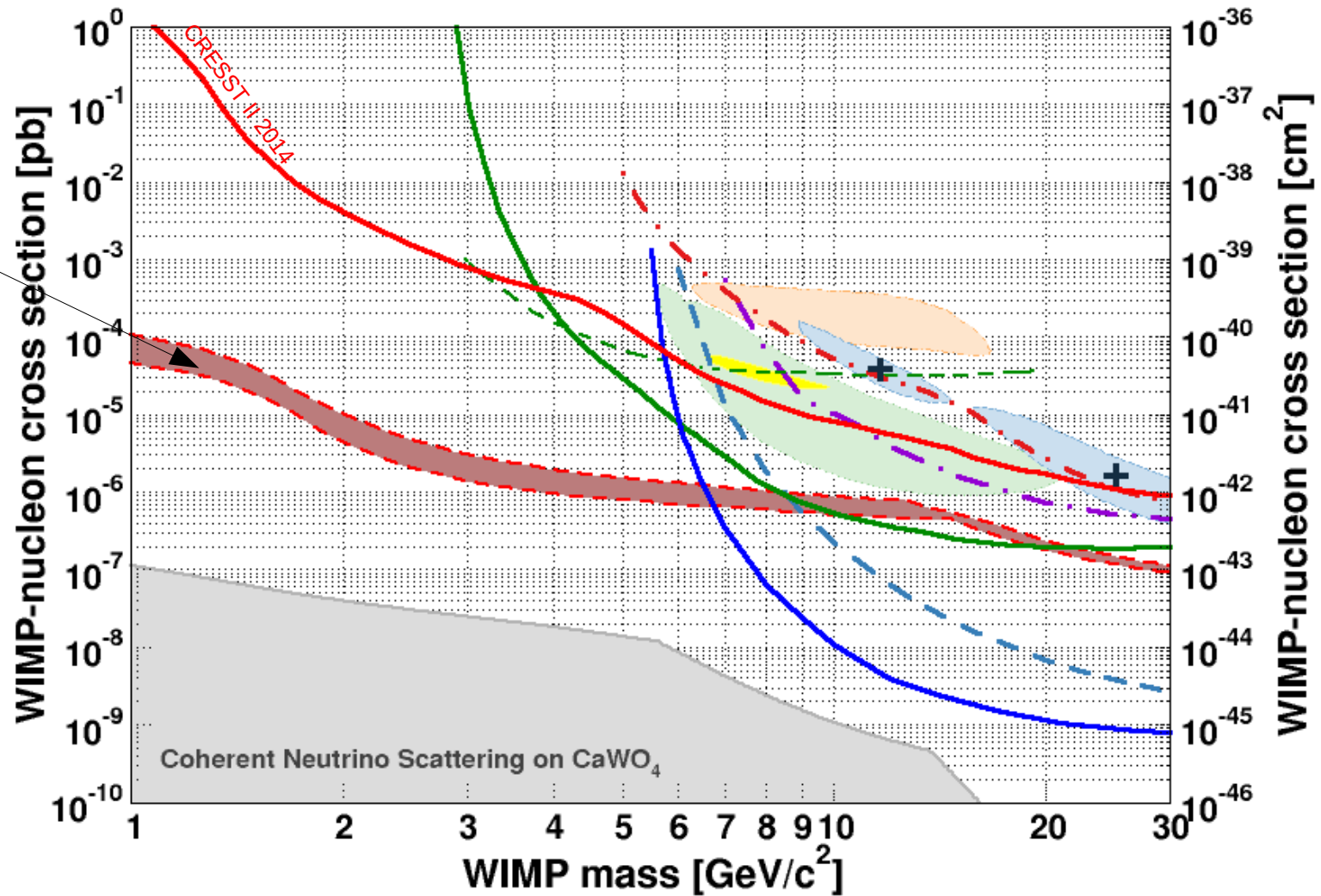
For details see poster Strauss, Pröbst, Petricca

CRESST III projections

arXiv:1503.08065 [astro-ph.IM]

Phase 1

- 50 kg-days
1 year of running with
10 small modules

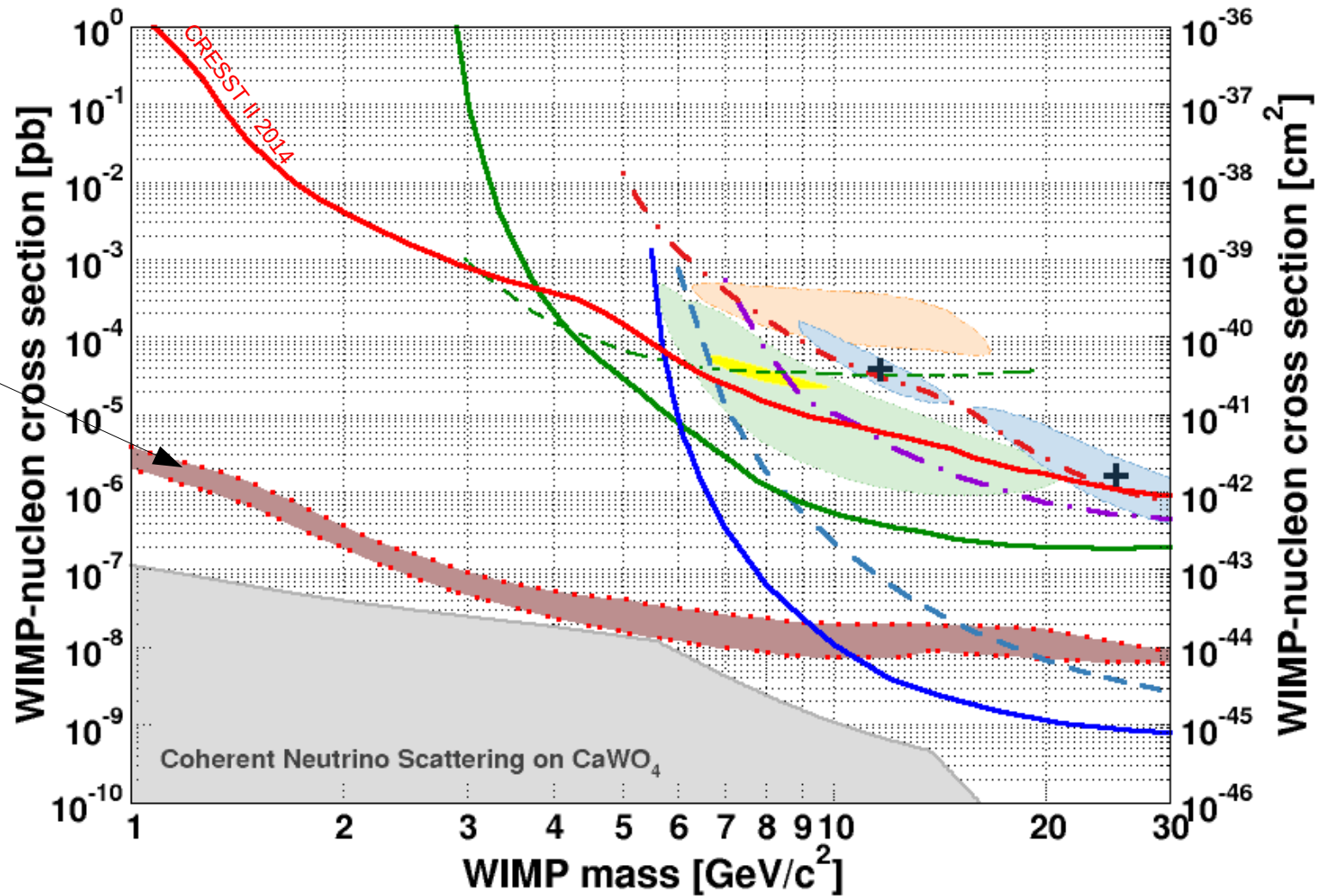


CRESST III projections

arXiv:1503.08065 [astro-ph.IM]

Phase 2

- 1000 kg-days
2 years of running with
100 small modules
- factor 100 reduction
in background



Take home message

